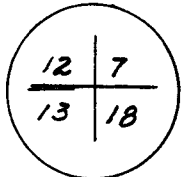


CERTIFIED LAND CORNER RECORDATION

R-70-W | R-69-W

DESCRIPTION OF CORNER EVIDENCE FOUND, AND ORIGINAL RECORD (If known)

T  
19  
N

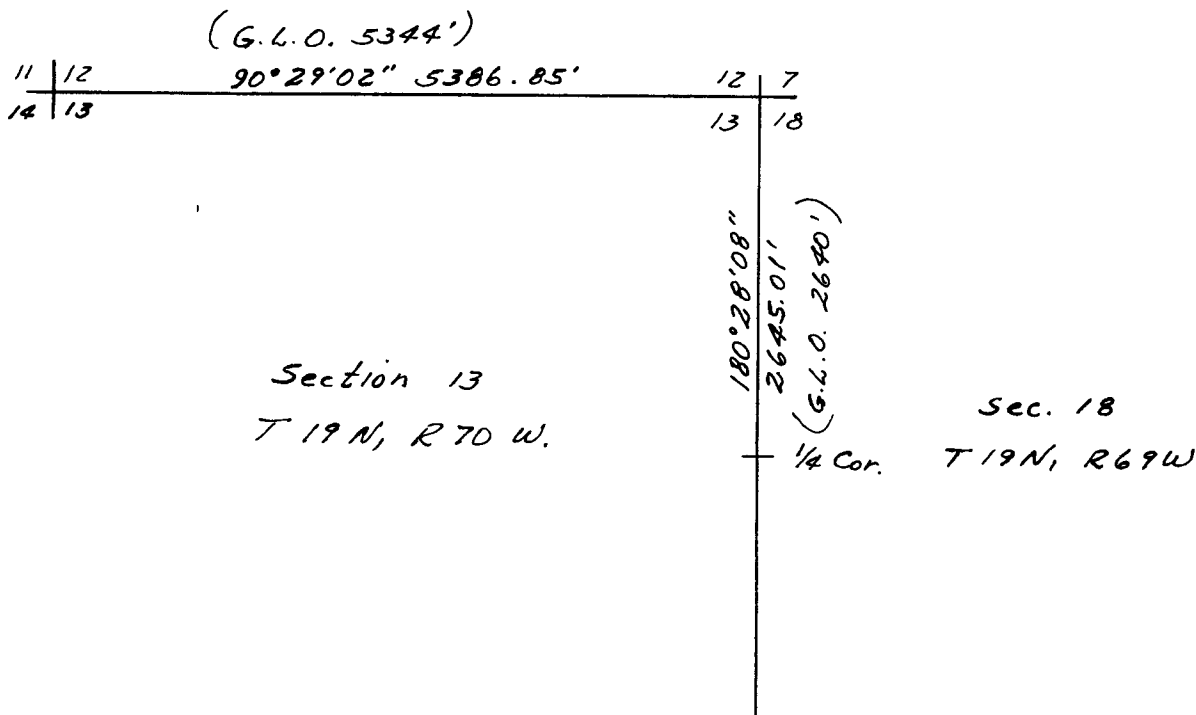


Found a red sandstone well set in ground located at a fence corner. Fences running east-west and north-south. Stone has well defined marks - Two in north face and Four in south face. Original Monument described as a sandstone 18" x 12" x 9".

DESCRIPTION OF MONUMENT AND ACCESSORIES ESTABLISHED TO PERPETUATE THE ORIGINAL LOCATION OF THIS CORNER:

Set a 1 1/2" Iron Pipe at west face of stone as corner monument. Left stone in place as a reference monument.

SKETCH, WITH COURSE AND DISTANCE TO ADJACENT CORNER IF DETERMINED IN THIS SURVEY. (May Sketch or Paste Reproduction on Reverse Side.)



I, Edward C. Fry certify that I have carefully performed or reviewed the work done on the diagrammed corner as reported on this recordation form and approve the same.

Edward C. Fry P.E./L.S. 662  
Signature of Surveyor Registration No.

STATE OF WYOMING,  
Office of Clerk and Recorder,  
County of Laramie

594251

This "corner record" was filed for record on the OCT 2 day of 1980, 19    , was noted on the cross-index plat and is assigned page No.     , in book No.     .

Janet C. Whitehead  
County Official

	Cross Index No. <u>J 3</u>	T. <u>19</u>	R. <u>69</u>	Mer.
Photographed.....		T. <u>    </u>	R. <u>    </u>	Mer.
Indexed.....		T. <u>    </u>	R. <u>    </u>	Mer.
Posted.....		T. <u>    </u>	R. <u>    </u>	Mer.
Assessor.....		T. <u>    </u>	R. <u>    </u>	Mer.